

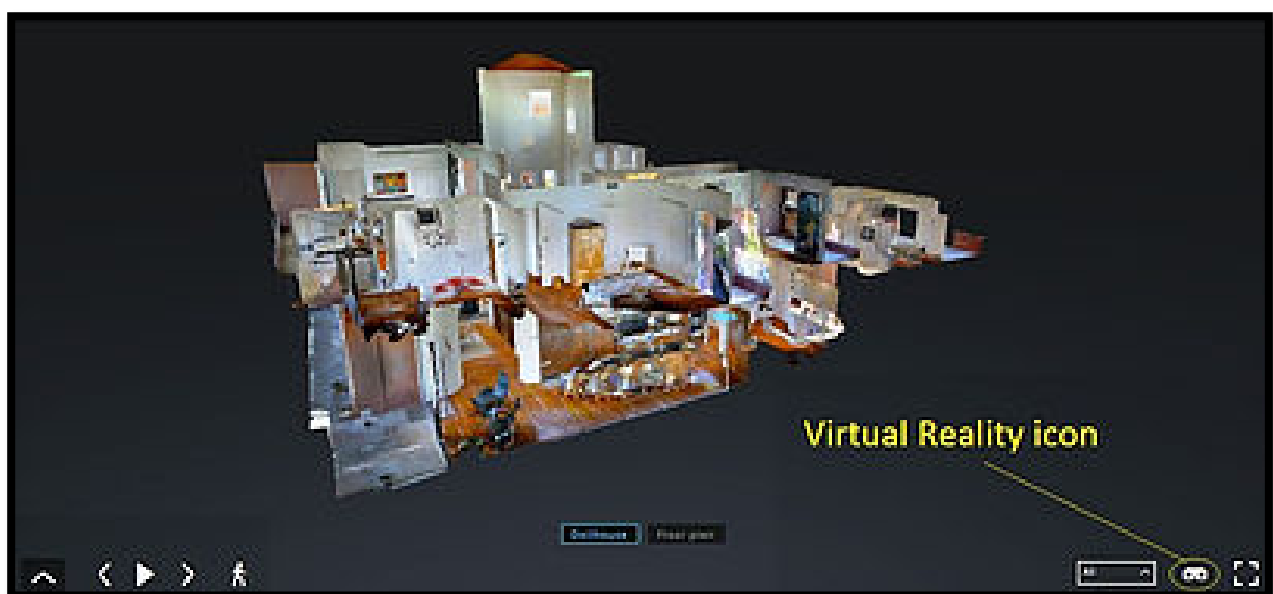


Samsung VR Gear

Contents

Connecting The Samsung Mobile Device.....	2
Preparing the Samsung Mobile Device.....	4
Creating the Oculus Account	5
Connecting A Charger	5
Wearing the Gear VR	6
Installing The Matterport App	7
Opening Virtual Tours.....	7
Removing The Samsung Mobile Device.....	8

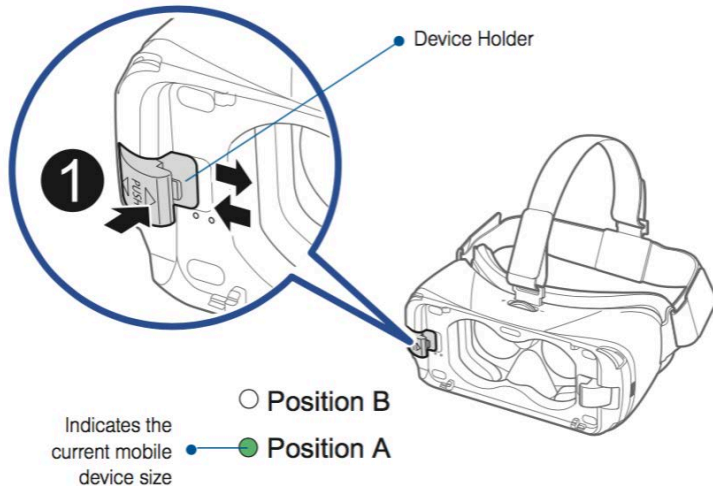
If you have the Matterport and Oculus App on your Samsung Mobile Device (S6, S7, Galaxy Note 5) just click on the Virtual Reality icon and connect to your Samsung VR Gear. Look around; follow the blue dots, and now, you're in the center of the action!



Connecting The Samsung Mobile Device

Before getting started:

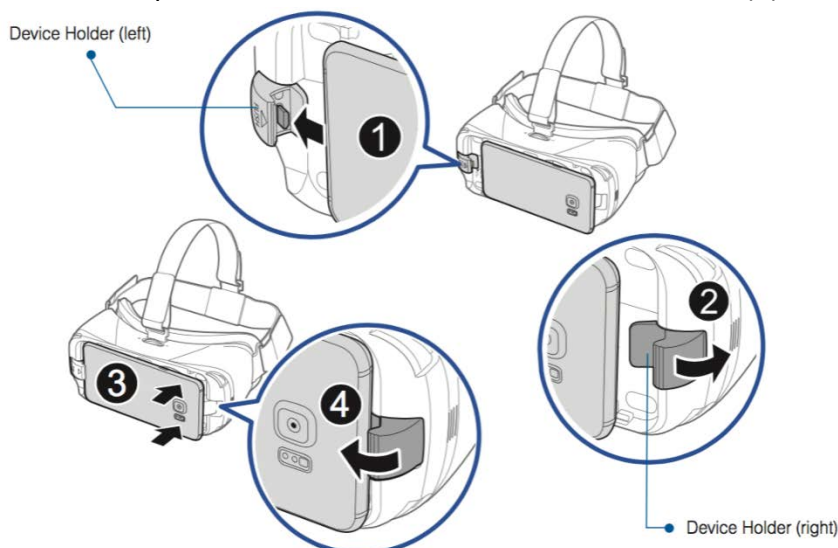
- Make sure your mobile device is connected to the Internet
 - Check that your mobile device has its volume turned up and isn't in silent mode.
1. Gently slide the device holder (1) into the correct position for the mobile device.
 - Position A – Samsung Galaxy Note5 or Samsung Galaxy S6 edge+
 - Position B – Samsung Galaxy S6 or Samsung Galaxy S6 edge



2. Hold the mobile device at a slight angle to slide the mobile device's USB port carefully onto the Gear VR connector (1). Be sure the connector is firmly seated against the USB port.

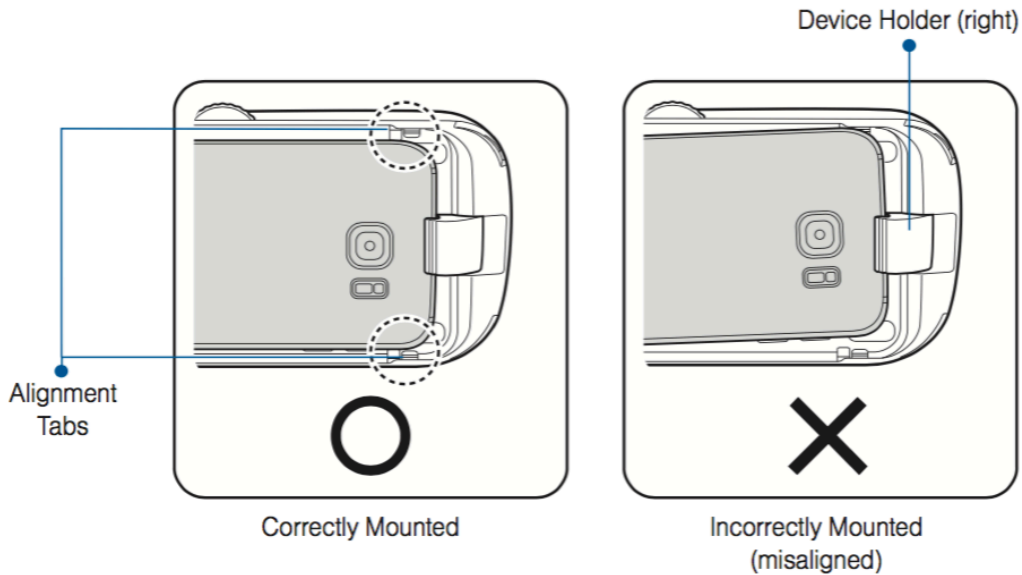
Pull the other device holder (2) slightly outward.

Press the top of the mobile device into the device holder (3) until it clicks (4).



Note:

- Make sure the screen of the mobile device faces inward, toward the Gear VR headset.
 - To avoid damage, do not insert the connector forcefully or roughly into the mobile device. You'll only need a small amount of force if the headset and the mobile device are in the correct position.
3. Make sure your mobile device isn't tilted to one side. It's important to align your mobile device's screen and the headset's lenses precisely.



4. You'll hear an audio prompt when the mobile device is properly connected.

Note:

- If you don't hear anything, or what you see through the Gear VR lenses doesn't change, remove the device and try again.
- Make sure your mobile device is on its home screen and isn't showing a different app.

Preparing the Samsung Mobile Device

To use the Gear VR headset, the Oculus app will need to be installed.

To install the Oculus app:

1. Connect the mobile device and the Gear VR headset for the first time:
2. After a moment, you should hear an audio prompt asking you to remove the mobile device from the headset:
 - a. Follow the installation steps:
After you have removed the mobile device from the headset, you will see a Gear VR welcome screen.
 - b. Tap Next on the welcome screen and follow the prompts.

Note:

- You may be asked to update the Android version during the installation.
 - When prompted, tap Install Apps to install selected applications.
 - At the end of the process, re-connect the mobile device to the Gear VR headset.
3. As the headset is put on, there should be a blank screen or a loading icon.

Note:

- If there is a sideways image or text, remove the device from the headset, wait a few seconds, then reconnect it.
- Ensure the mobile device is on its home screen and isn't open to a different app.
- Be sure the headset's device connector is firmly connected to the mobile device's USB port.
- After a moment you will see the Gear VR Health & Safety Warning. Use the focus wheel on the top of the headset to make sure the text is in sharp focus.
- Read and acknowledge the warning. Oculus Home will now load.

Creating the Oculus Account

You will need an Oculus account to download the Matterport app from the Oculus Store. As part of your account, you will choose an Oculus username. Recommend a standard naming convention for clients: example 13after-HS for Highland Square.

To create the Oculus account, launch the Oculus app after everything finishes installing. Then follow the prompts. If you wait, you will be prompted to create an Oculus account the first time the Oculus Store is accessed.

Note:

- Enter a valid email address. A confirmation link will be sent to finalize the account setup.
- Choose an Oculus username.

Connecting A Charger

There is a charging port on the underside of the Gear VR. To prevent damage to the phone, it is recommended to leave it in the Gear VR once it has been setup. The phone can be charged while inside the headset.

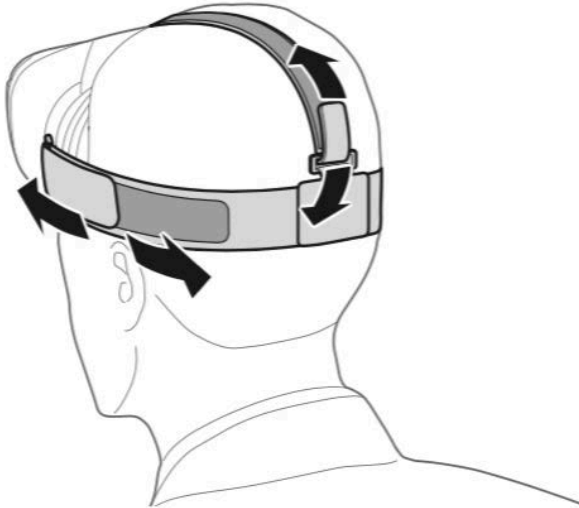
The charging port on the phone can be damaged if inserted or removed incorrectly. To minimize the risk of damage, the phone can remain in the Gear VR. This is recommended as the phone is solely used for virtual reality use.

Note:

- To prevent damage or injury, avoid standing up or moving around while the Gear VR is connected to power.

Wearing the Gear VR

1. Hook the back of the main strap on the back of your head, then pull the headset into place on your face in one smooth motion, like putting on a baseball cap.
2. If necessary, adjust the length of the top head strap and the main strap so that your eyes are aligned with the centers of the lenses.



Note:

For your safety and that of others, make sure you:

- Never walk or drive while wearing the Gear VR
- Always be aware of your surroundings while using the Gear VR.
- Don't use the Gear VR near stairs, balconies, windows, furniture, or other people.
- Remain seated while using the Gear VR. We recommend using a rotating desk chair for the best experience.

Installing The Matterport App

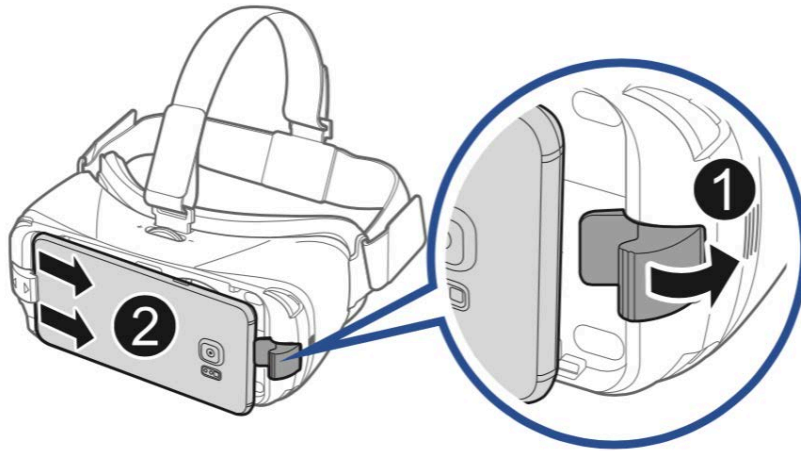
1. Install the phone into the Gear VR headset and put it on.
2. Once you have the headset on, you will be in the main room and menu of the Oculus software.
3. Move the white dot to the store icon and hit the center button on the touch pad to enter the store.
4. Put the white dot on APPS and then hit the center button on the touch pad.
5. Put the white dot on A/Z and hit the center button on the touch pad.
6. Slide your finger forward on the touch pad until you see the Matterport App.
7. Put the white dot on the Matterport App and hit the center button on touch pad.
8. Put the white dot on "Install" and tap the center button.

Opening Virtual Tours

1. Once the Matterport app has installed, put the white dot on Library at the bottom of the screen and touch the center button.
2. You will see a list of installed apps, put the white dot on the Matterport App and touch the center button to open it.
3. Once inside the Matterport App, put the circle on the "shared with me" hexagon, the eye icon will turn yellow and then green when it opens.
4. Put the circle on the virtual tour you want to view, and then they eye icon will turn yellow and then green when it opens.
5. In the lower right hand corner of the picture, put the circle on the play button. It will turn yellow and then green and your virtual tour will open.

Removing The Samsung Mobile Device

1. Gently pull the device holder at the top of the mobile device outward.
2. Carefully slide the mobile device out at an angle.



Ref: Samsung Gear VR User's Guide

<https://product-guides.oculus.com/en-us/documentation/gear-vr/latest/concepts/gsg-b-sw-software-setup/>